



Arctic Fox LLC—570 South 7th Street—Delano, Minnesota 55328 USA  
 Phone: (800) 654-5382 or (763) 972-2758—Fax: (763) 972-2873—[www.arctic-fox.com](http://www.arctic-fox.com)

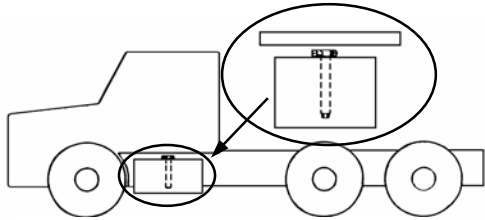
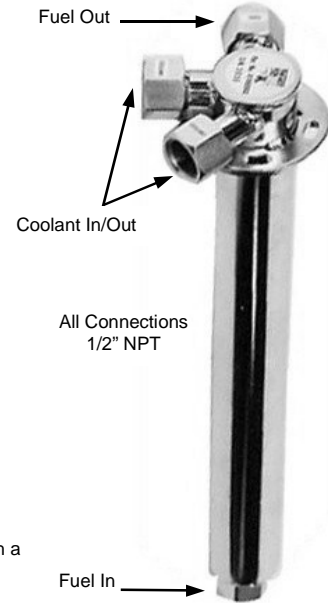
Arctic Fox Europe—Strijmaden 5—4703 Roosendaal—The Netherlands  
 Phone: 31 (0) 165 55 9245—Fax: 31 (0) 165 54 9640—[www.arctic-foxeurope.eu](http://www.arctic-foxeurope.eu)

## Hot Fox® In-Tank / In-Line Fuel Warmer

Other models also available—Auxiliary Fuel Standpipe—Integral Fuel Temperature Control

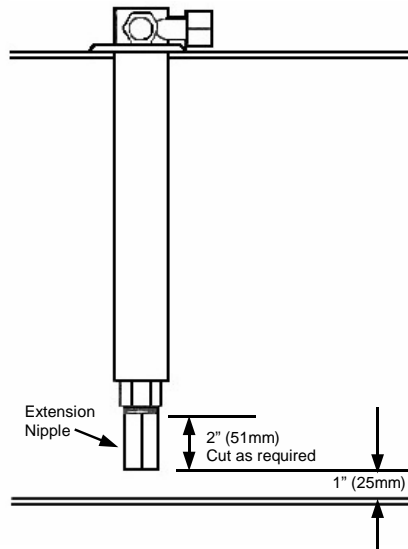
- Lowest Profile 1-1/3" (34mm)
- Stainless Steel
- All Welded Construction
- Sizes for All Tanks
- Rotates for Easy Mounting
- Mounts in Vehicle Sending Gauge Opening

Get faster warming and cleaner installation with the HOT FOX™ fuel warmer from Arctic Fox. It truly is an in-line fuel warmer that installs in the fuel tank. The simple 1-1/2 inch (38mm) diameter stainless steel tube inserts into the tank through a standard USA fuel gauge sending unit opening. Coolant passages inside the tube surround the fuel standpipe to provide excellent heat rise. The internal fuel line features an exclusive spiral design to maximize heat exchange between warm coolant and cold fuel.



**Low Profile Design**

HOT FOX™ fits where other fuel warmers can't.



For most efficient heat transfer, choose the longest HOT FOX™ fuel warmer available for your tank diameter/depth. Each unit comes with a 2" (51mm) extension fitting: A-858. Special sizes are available upon request.

Covered by U.S. Patent No.'s  
 4,748,960—5,029,634  
 and 5,135,044

SELECTION CHART		"A" Dimension		
Tank Depth/Diameter	Part Number	No Spacer	1/2" (13mm) Spacer KT-875	1" (25mm) Spacer KT-877
08-10" / 203-245mm	HFG 08-10	7" / 178mm	6-1/2" / 165mm	6" / 152mm
10-12" / 245-305mm	HFG 10-12	9" / 229mm	8-1/2" / 216mm	8" / 254mm
12-14" / 305-356mm	HFG 12-14	11" / 279mm	10-1/2" / 267mm	10" / 203mm
13-15" / 330-381mm	HFG 13-15	12" / 305mm	11-1/2" / 292mm	11" / 279mm
14-16" / 356-406mm	HFG 14-16	13" / 330mm	12-1/2" / 318mm	12" / 305mm
17-19" / 432-483mm	HFG 17-19	16" / 406mm	15-1/2" / 394mm	15" / 381mm
20-22" / 508-559mm	HFG 20-22	19" / 483mm	18-1/2" / 470mm	18" / 457mm
22-24" / 559-610mm	HFG 22-24	21" / 533mm	20-1/2" / 521mm	20" / 508mm
24-26" / 610-660mm	HFG 24-26	23" / 584mm	22-1/2" / 572mm	22" / 559mm
26-28" / 660-711mm	HFG 26-28	25" / 635mm	24-1/2" / 622mm	24" / 610mm
27-29" / 686-737mm	HFG 27-29	26" / 660mm	25-1/2" / 648mm	25" / 635mm

Heat Rise Data									Coolant Temperature between 192°F / 89°C and 201°F / 94°C—Coolant flow at 5GPM/19LM								
HFG 13-15			HFG 20-22			HFG 27-29			HFG 13-15			HFG 20-22			HFG 27-29		
Fuel Flow GPM/LM	Temp In F/C	Temp Out F/C	Fuel Flow GPM/LM	Temp In F/C	Temp Out F/C	Fuel Flow GPM/LM	Temp In F/C	Temp Out F/C	Fuel Flow GPM/LM	Temp In F/C	Temp Out F/C	Fuel Flow GPM/LM	Temp In F/C	Temp Out F/C	Fuel Flow GPM/LM	Temp In F/C	Temp Out F/C
0.17/0.6	+1.7/-17	69.5/21	0.19/0.7	-3.7/-20	84.3/29	0.21/0.8	0.0/-18	81.7/28	0.17/0.6	+1.7/-17	69.5/21	0.19/0.7	-3.7/-20	84.3/29	0.21/0.8	0.0/-18	81.7/28
0.50/1.9	+2.6/-16	43.2/6	0.51/1.9	-3.7/-20	51.6/11	0.48/2.2	+1.8/-18	71.6/22	0.50/1.9	-20.4/-29	19.2/-7	0.56/2.5	-19.9/-29	34.2/1	0.49/1.9	-21.1/-30	55.5/13
1.53/5.8	-0.7/-18	23.9/-5	1.44/5.5	-3.8/-20	34.2/1	1.57/6	2.2/-17	45.7/8	1.53/5.8	-20.9/-29	60.9/16	0.20/0.8	-19.2/-28	67.8/20	0.24/1.1	-22.0/-30	66.2/19
0.16/.6	-20.9/-29	60.9/16	0.20/0.8	-19.2/-28	67.8/20	0.24/1.1	-22.0/-30	66.2/19	0.16/.6	-20.9/-29	60.9/16	0.20/0.8	-19.2/-28	67.8/20	0.24/1.1	-22.0/-30	66.2/19
0.50/1.9	-20.4/-29	19.2/-7	0.56/2.5	-19.9/-29	34.2/1	0.49/1.9	-21.1/-30	55.5/13	0.50/1.9	-20.4/-29	19.2/-7	0.56/2.5	-19.9/-29	34.2/1	0.49/1.9	-21.1/-30	55.5/13
1.50/5.7	-20.3/-29	5.4/-15	1.59/6	-20.5/-29	16.8/-8	1.51/6.9	-20.1/-29	26.1/-3	1.50/5.7	-20.3/-29	5.4/-15	1.59/6	-20.5/-29	16.8/-8	1.51/6.9	-20.1/-29	26.1/-3
0.22/0.8	-34.7/-37	37.8/3	0.16/0.6	-36.1/-38	78.9/26	0.17/0.6	-31.8/-35	67.2/20	0.22/0.8	-34.7/-37	37.8/3	0.16/0.6	-36.1/-38	78.9/26	0.17/0.6	-31.8/-35	67.2/20
0.52/1.9	-34.8/-37	9.5/-13	0.50/1.9	-36.0/-38	18.6/-7	0.54/2	-32.9/-36	37.2/3	0.52/1.9	-34.8/-37	9.5/-13	0.50/1.9	-36.0/-38	18.6/-7	0.54/2	-32.9/-36	37.2/3
1.44/5.5	-34.8/-37	-7.5/-22	1.48/5.6	-35.9/-38	-1.4/-19	1.60/6	-33.4/-36	10.8/-12	1.44/5.5	-34.8/-37	-7.5/-22	1.48/5.6	-35.9/-38	-1.4/-19	1.60/6	-33.4/-36	10.8/-12

Recommendation: The HFG & SHH Series HOT FOX™ fuel warmer can mount into a standard USA fuel sending gauge opening. **For installations into non-reinforced gauge hole openings in tanks manufactured of 14 gauge (0.075"/1.9mm) and lighter steel or 0.100" /2.5mm and lighter aluminum, the appropriate adapter kit KT-826F, KT-827C, or KT-831 CS is suggested.** For extreme vibration applications and all applications involving horizontal mounting, the use of either A-1721, or A-2060 adapters is suggested. See reverse for details.



Arctic Fox LLC—570 South 7th Street—Delano, Minnesota 55328 USA  
 Phone: (800) 654-5382 or (763) 972-2758—Fax: (763) 972-2873—[www.arctic-fox.com](http://www.arctic-fox.com)

Arctic Fox Europe—Strijmaden 5—4703 Roosendaal—The Netherlands  
 Phone: 31 (0) 165 55 9245—Fax: 31 (0) 165 54 9640—[www.arctic-foxeurope.eu](http://www.arctic-foxeurope.eu)

**Adapter Kits Available for OEM & Aftermarket Applications Used to Simplify Some Installations**  
**Recommended Use Of Adapter Kits**

- When installing Hot Fox™ model heaters into a non-reinforced sending gauge opening.
- When installing Hot Fox™ model heaters in tanks less than 14 gauge, 0.075"/1.9mm steel or 0.100"/2.5mm aluminum.
- When installing Hot Fox™ model heaters into tank flanges.

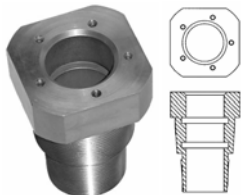
**Recommended Use Of A-1721 or A-2060 Adapters**

- When installing Hot Fox™ model heaters on applications with extreme vibration.
- When installing Hot Fox™ model heaters horizontally.

**Consider Using A Spacer Kit**

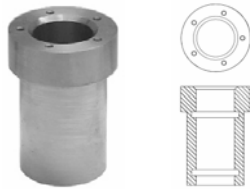
- When sizing a Hot Fox™ model heater to a length that will reach to an inch off the tank bottom.
- When raising the Hot Fox™ model heater will allow easier connections or to route hoses around obstacles.

ROUND TANKS	FLAT TANKS			120mm Flange
KT-827C for 22"-29"/559-737mm Dia. KT-831CS for 14"-21"/356-533mm Dia.	KT-826F	KT-828DF	KT-832L 10"/165mm Dia. KT-4231 4.7" 120mm Dia.	KT-829K
Applications: Adapts standard Arctic Fox fuel warmer mount to Hot Fox™ mount. <b>KIT COMPONENTS</b> Adapter Plate 6"/152mm Square (1) A-827 for KT-827C A-831 for KT-831CS Backing Plates (2) A-1795 Clips (4) A-649 Gasket (1)—A-611 Mounting Bolts (12) - A-610 Template (1)—A-708	Applications: Adapts standard Arctic Fox fuel warmer mount to Hot Fox™ mount. <b>KIT COMPONENTS</b> Adapter Plate 6"/152mm Square (1) A-826 Backing Plates (2) A-2025 Clips (4) A-649 Gasket (1)—A-611 Mounting Bolts (12) - A-610 Template (1)—A-708	Applications: Adapts 10-hole Tokheim and Polar Baron mounts to Hot Fox™ mount. <b>KIT COMPONENTS</b> Adapter Plate (1) A-826 Gasket (1) A-645 Mounting Bolts (10) - A-610	Applications: Adapts misc. automotive/industrial OEM 5-3/4" B.C. flanges & Arctic Fox fuel warmer weld on flanges A-820 & A-823 to Hot Fox™ mount. <b>KIT COMPONENTS</b> Adapter Plate KT-832L—(1) A-832 KT-4231—(1) A-2176 Gasket KT-832L—(1) A-821 KT-4231—(1) A-811 Mounting Bolts K-832L—(10) - A-610 K-4231—(10) A-856	Applications: Adapts Kenworth OEM 104.5mm B.C. Flange to Hot Fox™ mount. <b>KIT COMPONENTS</b> Adapter Plate (1) - A-829 Gasket (1) - A-811 Mounting Bolts (10) - A-856



**Threaded Adapter**  
Fits 1-1/2" & 2" NPT Couplings

- A-1721**  
(To -40° F/C)  
Parts Included  
(1) A-1792 Gasket  
(2) A-1726 O-Ring
- A-1721F**  
(To -90° F/ -67°/C)  
Parts Included



**Weld-In Adapter**  
For Fuel or Hydraulic Tanks

- A-2060 (SS)**  
**A-2060-A (Alum.)**  
(To -40° F/C)  
Parts Included  
(1) A-1792 Gasket  
(2) A-1726 O-Ring
- A-2060F**  
(To -90° F/ -67°/C)  
Parts Included  
(1) A-1792 Gasket  
(2) A-2758 O-Ring



**A-870**  
Blank Plate

Application:  
Use to cover tank opening if Hot Fox™ has been removed.

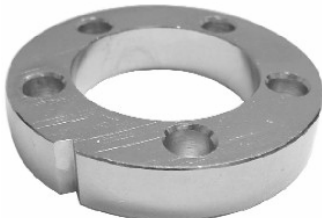


**A-4607**  
Tapped Plate

Application:  
Use to install an auxiliary standpipe in a standard USA sending gauge opening.

Center is tapped for 1/2" NPT

**SPACER KITS**



**KT-875**

Purpose: To raise HOT FOX™ fuel warmer flange 1/2" (13mm) above tank.

Parts Included:

- (5) A-863 #10-32 UNF socket head bolts
- (1) A-841 Gasket
- (1) A-875 1/2" (13mm) Spacer

**KT-877**

Purpose: To raise HOT FOX™ fuel warmer flange 1" (25mm) above tank. For Kenworth recessed gauge opening & misc. others

Parts Included:

- (5) A-869 #10-32 UNF socket head bolts
- (1) A-841 Gasket
- (1) A-877 1" (25mm) Spacer